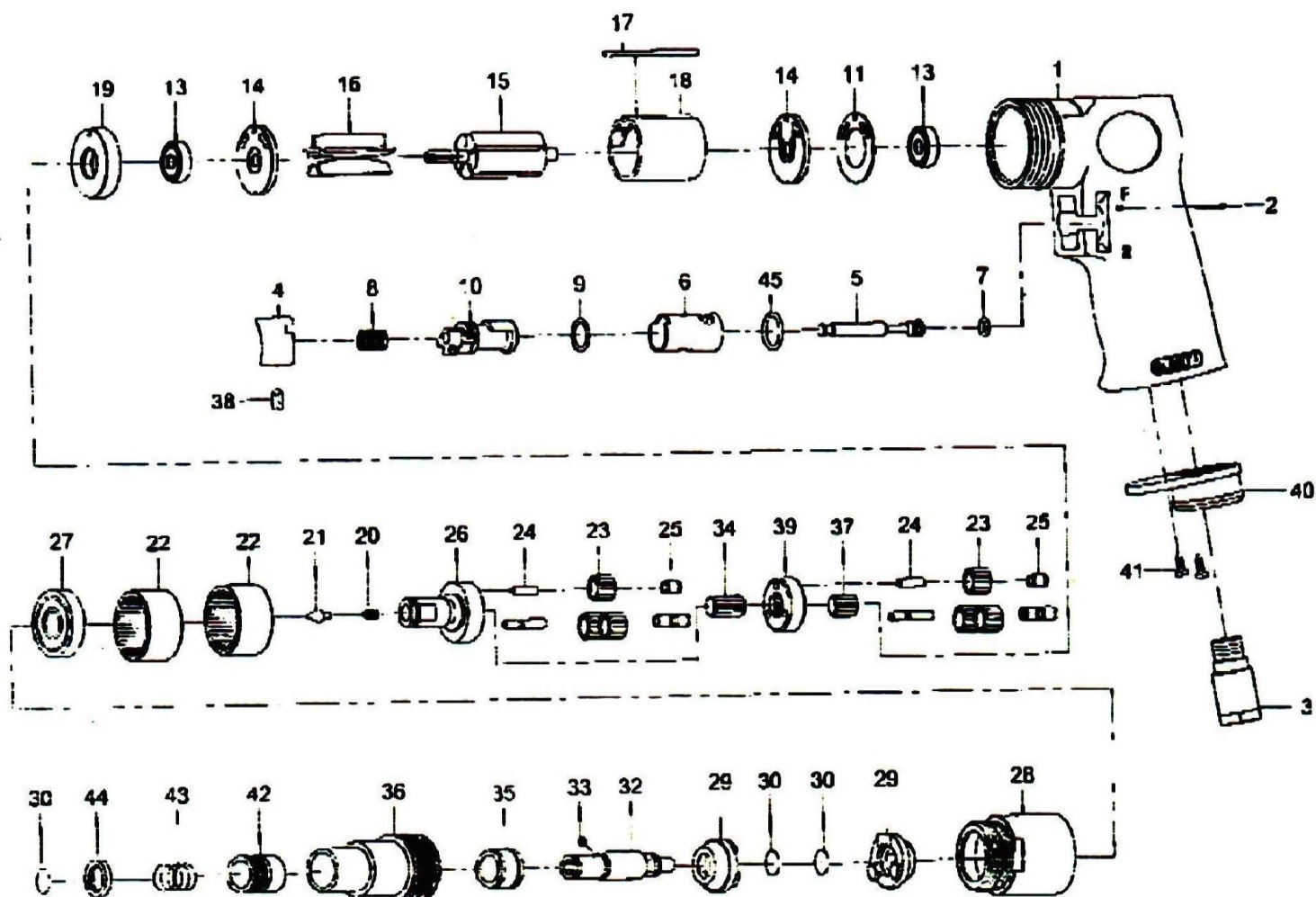


Model No.:

# Air Screw Driver ASD-860S



Model No.:

# Air Screw Driver ASD-860S



## MODEL ASD-860S Air Screw Driver

INDEX	PART NO.	DESCRIPTION	INDEX	PART NO.	DESCRIPTION
1	B860S00080201	HOUSING	24	B860S00030124	PIN (4×13.8L)
2	B860S00080202	SPRING PIN (Ø2.5×24L)	25	B860S00070425	BUSHING
3	B860S00070103	AIR INLET	26	B860S00083326	WORK SPINDLE
4	B860S00070104	TRIGGER	27	B860S00080227	BALL BEARING (6201Z)
5	B860S00080205	VALVE STEM	28	B860S00080328	CLAMP NUT
6	B860S00080206	REVERSE BUSHING	29	B860S00080429	DRIVE DOG
7	B860S00070107	O-RING (Ø4.8×Ø1.9)	30	B860S00080230	RETAINING RING
8	B860S00070108	VALVE SRPING	32	B860S00080432	CAM SPINDLE
9	B860S00080209	O-RING (Ø12×Ø1.5)	33	B860S00040145	STEEL BALL (1/8")
10	B860S00080210	REVERSE LEVER	34	B860S00070421	CENTER GEAR
11	B860S00080211	MOTOR GASKET	35	B860S00080435	CLUTCH BUSHING
13	B860S00030113	BALL BEARING (626ZZ)	36	B860S00080436	CLUTCH HOUSING
14	B860S00080214	END PLATE	37	B860S00070420	PINION GEAR
15	B860S00080215	ROTOR	38	B860S00070935	SET SCREW (M4×8L)
16	B860S00080216	ROTOR BLADES	39	B860S00070427	REDUCTION SPINDLE
17	B860S00021713	SPRING PIN (Ø2.5×55L)	40	B860S00070110	EXHAUST DIFFUSER
18	B860S00021822	CYLINDER	41	B860S00040309	SCREW (TS2.9)
19	B860S00080219	FRONT END PLATE	42	B860S00080242	BALL RETAINER
20	B860S00080220	SPRING	43	B860S00080243	SPRING
21	B860S00080221	SPRING GUIDE	44	B860S00080244	WASHER
22	B860S00080222	INTERNAL GEAR	45	B860S00080247	O-RING (Ø13.8×Ø2)
23	B860S00070423	PLANET GEAR			